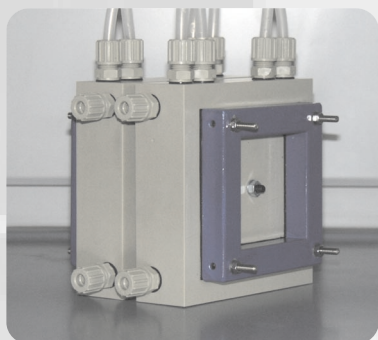


# PCCell ED 64 0 04

## Electrodialysis Cell System for Laboratory Evaluation



### Features:

- Almost all membrane combinations may be evaluated
- Weight: 3 kgs
- Dimension stable electrodes (Precious metal coated Titanium)
- Easy to open and close
- Typical transport: 0.1 - 2 mol salt per hour

PCA offers Electrodialysis Cell Systems for laboratory up to industrial scale. Our PCCell ED 64 series enables you to evaluate all electro dialysis process possibilities at lab scale.

### Four Chamber Electrodialysis Cell PCCell ED 64 0 04

#### Technical Data

Membrane size:	110 x 110 mm <sup>2</sup>
Active membrane area:	64 cm <sup>2</sup> per membrane
Processing length:	80 mm
Cell thickness:	0.5 mm
Number of cell pairs:	up to 20
Electrodes:	Anode Pt/Ir- coated Ti stretched metal Polypropylene
Electrode housing:	Ti stretched metal
Cathode:	

#### Typical Configuration

10 cell pairs with standard anion and cation exchange membranes and a total membrane area of 0.25 m<sup>2</sup>.

#### Optional Membrane Sets

PC Acid 100/PC SK:	For sulfuric acid application
PC Acid 60/PC SK:	For monovalent acid application

PCCell GmbH  
Lebacher Strasse 60  
D-66265 Heusweiler

phone: +49 (0) 6806 60 37 30  
fax: +49 (0) 6806 60 37 31

e-mail: [pccell@electrodialysis.de](mailto:pccell@electrodialysis.de)  
Internet: <http://www.pccell.de>

**PCCell**

GmbH